

VENTILATION SOLUTIONS

EXPERTS IN IMPROVING INDOOR AIR SINCE 1955





MORE THAN 70 YEARS OF EXPERIENCE

Founded in 1955, Airflow has grown from one man's expertise in fan design and air flow measurement into a thriving international group. Renowned for its innovative approach to new product development and air movement techniques, Airflow can offer you a variety of ventilation solutions to suit your needs.

With headquarters in High Wycombe, where the business was founded, Airflow has subsidiaries in Germany and the Czech Republic and has global distributors from Norway to New Zealand.

Airflow's knowledgeable and committed staff continually develop new and innovative products that raise standards and provide long term, reliable ventilation solutions.



UNITED KINGDOM

High Wycombe (Head Office)

Our founder started the business in 1955, just one mile from the current site, which has been Airflow's headquarters since 1960, co-ordinating our global activities.



GERMANY

Airflow has been serving ventilation products and air measurement devices to the German and European markets for over 50 years. Operating near Cologne, Airflow Germany has their own customer service, sales and after sales team.



CZECH REPUBLIC

Founded in Prague over 20 years ago, the Airflow Czech Republic team offer sales and servicing of ventilation products for the Eastern European market.



Who We Inspire

Architects and Consultants

Design your projects with effective ventilation solutions that perform

Mechanical Engineers

Technical information on Airflow products is readily available, including BIM files and performance data

House Builders & Developers

A large range of affordable, high-quality domestic products designed with building regulations in mind

Property Management

Products with ease of access for maintenance, cleaning and filter changes

Facility Management

Access to data in products to provide important information, as and when needed

Social Housing

Effective and affordable ventilation solutions that prevent mould and condensation whilst keeping energy bills low

Merchants & Resellers

Supporting resellers with the best products to meet their customer requirements



AIR ACADEMY & TRAINING CENTRE

Airflow is proud to welcome customers to the state-of-the-art Air Academy training facility at the Airflow UK Head office in High Wycombe.

This 500m² facility is designed to educate, inform and inspire all visitors. More than just an experience centre, the Air Academy is an elite training facility that is able to offer CIBSE approved CPD seminars.

One of our experts will happily provide you with a tour of the academy which showcases Airflow's wide range of innovative products. You'll be guided through the history of ventilation and be able to see the first inclined manometer to go into commercial production, as well as the first Internet-controllable MVHR units in the UK.

To arrange a visit to the Air Academy, please contact your Account Manager or alternatively contact Airflow on: **+44 (0)1494 525252** or e-mail info@airflow.com.

TRAINING SERVICES

Airflow offers on-demand CPD sessions for architects, specifiers, and M&E consultants at the Air Academy or a location of your choice. These sessions can also be hosted online. Scan the QR code to find out more and to book onto one of these highly popular sessions at a date, time and location convenient to you.

CIBSE APPROVED CPD

Understanding UK Building Regulations Relating to:

1. Residential Mechanical Ventilation with Heat Recovery.
2. Mechanical Ventilation with Heat Recovery for Commercial Applications.
3. Residential & Commercial MVHR with integrated Cooling.



Book your CPD



RESPONSIBLE MANUFACTURING

ISO 9001 Quality Matters

Airflow is dedicated to delivering innovative, high-quality products with in-built reliability and proudly holds the ISO 9001:2015 certification. This ensures that every product we produce is rigorously tested and meets stringent international standards, assuring our customers of its long-lasting durability over years of operation.



ISO 14001 Environmental Matters

Airflow is dedicated to minimising its environmental impact and has successfully achieved the ISO 14001:2015 certification. This reflects our ongoing commitment to enhancing operational efficiency while reducing energy consumption, waste, and overall resource usage.



Airflow's Sustainability Journey



COMPLIANCE

BIM Airflow products are provided in BIM file format. Other formats ie: DWG, RFA are also available.

ErP Airflow manufactures ErP compliant fans and ventilation systems; ensuring that you are receiving energy efficient ventilation systems that perform.

WEEE Airflow Developments Ltd is registered under the Waste Electronic and Electrical Equipment (WEEE) Directive scheme.

IP Ratings Our fans are designed to meet international Ingress Protection (IP) ratings. These ratings use two numerical classifications, one for water protection and the other for dust protection.

SAP The SAP assessment incentivises low carbon developments. To help developers achieve their SAP assessment, Airflow offers a number of products and accessories with SAP eligibility.

Passive House In a drive to reduce energy consumption, Airflow produces a large range of residential and commercial MVHR units with Passive House certification. This certification means that the units use minimal energy and help to reduce energy consumption, heat loss and energy bills of the building.

Quiet Mark Airflow offer Quiet Mark approved fans. Quiet Mark approval means that the fan is extremely quiet but does not compromise on performance when in operation.

Building Regulations All of our products comply with the current Building Regulations Approved Document F Volumes 1 and 2: Ventilation (England and Wales) and Approved Document L: Volumes 1 and 2: Conservation of fuel and power. Airflow's products also comply with Scottish Building Standards, Technical Handbook 2015 for Domestic and Non-Domestic Applications, Standard 3.14 and Building Regulations (Northern Ireland) 2014, Part K.



WORKING TOGETHER

By working with professional organisations, Airflow is committed to improving the standards of regulations, product design, performance and on-site installation of ventilation products.



Building Research Establishment (BRE) is an independent organisation that is dedicated to improving the built environment and implementation of the Building Regulations.



The British Electrotechnical and Allied Manufacturers Association (BEAMA) has a specialist ventilation group that promotes best practice and installation, product specification and Building Regulations.



New London Architecture (NLA) is an independent information resource and discussion forum focused on London's built environment.



Fan Manufacturers Association (FMA) focuses on influencing and monitoring commercial and industrial fan regulations.



European Ventilation Industry Association (EVIA) assists in drafting regulations and promotes best practice.



The Residential Ventilation Association (RVA) provides a technical overview of regulations and advises on the Building Regulations.



The Kitchen Bathroom Bedroom Specialists Association (KBSA) promotes best practice kitchen, bedroom and bathroom design, which includes ventilation.



Federation of Environmental Trade Associations (FETA) represents the ventilation industry to European, U.K. governmental and regulatory bodies.



HEVAC represents the building services sector and emphasises in improving product performance and client awareness of ventilation.



TÜV is a European technical certification body that independently assesses products to EN308 standard.



VTT is a Finnish certification body that assesses products on their annual efficiency and SFP.



The Passive House Institute is an independent German research organisation that developed the Passive House standard and promotes its global adoption.



The Passivhaus Trust advocates the adoption of the Passive House standard in the U.K.



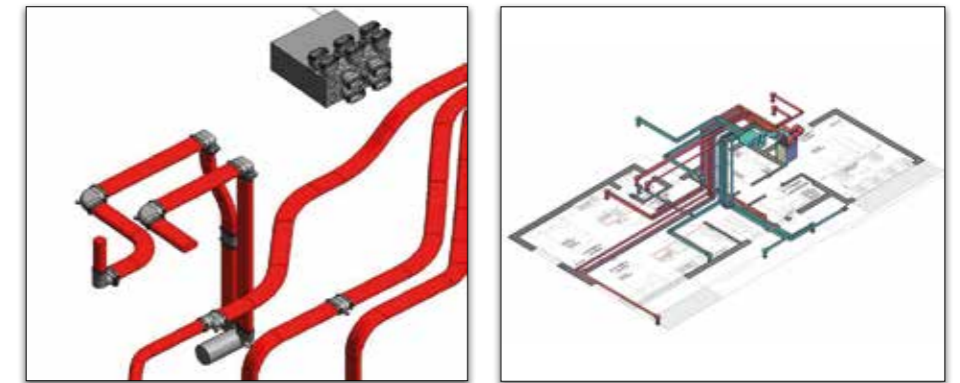
BSRIA provides specialist support for design, construction, facilities management, product testing and market intelligence in the construction and building services industry.

FUTURE PROOFING SPECIFICATION

BIM

Building Information Modelling (BIM) uses CAD technology with product specifications to provide detailed architectural drawings. Mandatory for UK government contracts, BIM has been proven to reduce the construction costs and speed up the construction process.

To help in the design of quality ventilation systems in commercial, industrial and domestic settings, Airflow has produced BIM level 2 files for all of their products. These files are compatible with Revit – a CAD programme.



SELECTION SOFTWARE

Airflow's selection software, Selectair has been developed to help you make the right choice of product for your project and provide the relevant information for planning.

SELECTair FANS

Selectair Fans helps you find the ideal residential fan to meet your requirements based on location within the dwelling and installing requirements.



SELECTair RESIDENTIAL MVHR

Via the MagiCAD Cloud platform, Selectair for Residential MVHR will enable you to make a rapid but accurate choice of solution for your specific project.



SELECTair COMMERCIAL MVHR

This software enables you to specify the ideal commercial Mechanical Ventilation with Heat Recovery (MVHR) unit for your needs.



Find out more

USING THE LATEST TECHNOLOGY

Airflow has introduced a number of control systems that make it quicker and easier for you to get the level of ventilation that you need, when you need it.


Airflow products can be controlled with Bluetooth, VAV, BACNet, KNX, Modbus and BMS technologies. Furthermore, a number of our products can be controlled via an Internet-enabled device at home or on-the-go, including Airflow's Adroit MVHR range.



RESIDENTIAL EXTRACTOR FANS

MECHANICAL EXTRACT VENTILATION (MEV)

iCON®




- 3 model range with flow rate up to 84 l/s (302 m³/h)
- Timer, Humidity Timer and Motion Sensor 'snap-in' modules available
- Ductable for short runs
- Can be surface mounted or recessed
- Red Dot Design Award winning silent iris shutter prevents backdraughts
- A range of coloured covers available
- IPX4 Rating
- SELV versions available
- 3 year warranty

iCONsmart



- 2 model range with flow rate up to 34 l/s (122 m³/h)
- Multi-function micro modules available for additional functionality
- Ductable for short runs
- Quiet Mark Certified with noise levels from 23.5 dB(A)
- Bluetooth controlled via myAirflow app
- IPX5 Rating
- 5 year warranty

QuietAir™




- 4 model fan range with flow rate up to 72 l/s (259 m³/h)
- Timer, Humidity Timer, Motion Sensor and Variable Speed Control versions available
- Quiet Mark Certified with noise levels from 25 dB(A)
- Very low SFP and power consumption
- Long-life ball bearings with approx. 40,000 hr life
- IP45 Rating
- QT100 model available in black
- 3 year warranty

Airovent MEV

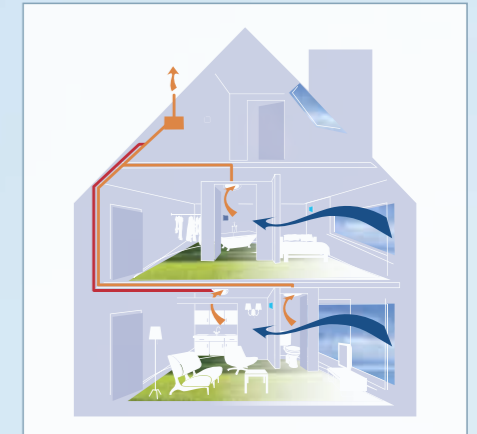


- 2 unit range offering Whole House ventilation from a central location
- Flow rate up to 98 l/s (352 m³/h)
- Multiple fan speeds available
- Low energy EC motors
- Basic, Timer and Humidity versions available
- AirflexPro compatible units available
- 2 year warranty

Airovent RF MEV




- Whole House ventilation from a central location with built-in humidity sensor
- Flow rate up to 139 l/s (500 m³/h)
- Multiple fan speeds available to ensure the unit is run at its most efficient
- Used with wireless in-room RF controllers
- Low energy EC motor with low noise backward curve impeller
- Available with Basic, Timer, Humidity and CO₂ controls
- 2 year warranty




The diagram illustrates a typical "System 3" central extract duct layout, focusing on the 'Best Practice' that the toilet extract is separate to, or positioned in line between the kitchen extract and the extract unit. The unit should only be positioned in the loft, if it is positioned within the heated envelope of the building.

Aventa In-Line




- 3 model range with flow rate up to 144 l/s (520 m³/h)
- Basic and Timer versions available
- In-line mixed flow fans with 2 speed operation
- High pressure, low noise levels
- Available as a shower kit with optional LED light
- Access to motor and impeller without dismantling ducting
- IPX4 Rating
- 3 year warranty

Aria




- Entry level 100mm axial fan with flow rate up to 18.5 l/s (67 m³/h)
- Basic, Timer, Humidity Timer and Motion Sensor Timer versions available
- Low noise levels from 26 dB(A)
- Can be ceiling and wall mounted
- IPX4 Rating
- 2 year warranty

LOOVENT eco




- 2 speed filterless centrifugal fan with flow rate up to 31 l/s (110 m³/h)
- Timer, Humidity Timer and Motion Sensor Timer versions available
- Economical to operate
- Can be surface mounted or recessed in portrait or landscape
- IPX5 Rating
- SELV versions available
- 5 year warranty

LOOVENT eco dMEV




- Continuous running centrifugal fan with 2 speed operation
- Flow rate up to 31 l/s (110 m³/h)
- Can be surface mounted or recessed in portrait or landscape
- Timer and Humidity Timer versions available
- SELV versions available
- IPX5 Rating
- 5 year warranty

iCONstant



- Continuous running axial fan
- Selectable trickle speeds 6 / 8 / 13 l/s
- Boost speeds 8 / 13 l/s with maximum of 22 l/s
- Extremely quiet when running - from 10 dB(A)
- Timer and Humidity Timer versions available
- Unique setup diagnostic LED light
- Very low energy consumption
- Recognised on SAP PCDB
- IPX5 Rating
- 3 year warranty

iCONstant flex




- Continuous running axial fan
- Selectable trickle speeds 5 / 8 / 11 / 13 / 16 l/s that can be manually adjusted
- Boost speeds 8 / 11 / 13 / 16 l/s with maximum of 20 l/s
- Timer and Humidity Timer versions available
- Unique setup diagnostic LED light
- Settings maintained during power interruption
- Flow sensor ensures the fan maintains a constant extraction rate under all conditions
- IPX5 Rating
- Recognised on SAP PCDB and SAP 10.2 compliant
- 3 year warranty

RESIDENTIAL MECHANICAL VENTILATION WITH HEAT RECOVERY (MVHR)



DV65	DV82	DV130
 <p>Entrö-V</p> <ul style="list-style-type: none"> For use in dwellings up to 116 m² Flow rate up to 67 l/s (242 m³/h) at 100 Pa Over 85% thermal efficiency Double Coarse 55% (G4) filter design with an optional ePM1 60% (F7) supply air filter Automatic, 100% summer bypass Complies with Building Regulations, ErP and SAP recognised Choice of spigot locations (top entry as standard) Also available as part of the DV65 Entrö-V MVHR Kit (part no: 90001654) which provides a complete ventilation system ready for install 2 year warranty* 	 <p>Entrö-V</p> <ul style="list-style-type: none"> For use in dwellings up to 184 m² Flow rate up to 83 l/s (300 m³/h) at 100 Pa Over 85% thermal efficiency Double Coarse 55% (G4) filter design with an optional ePM1 60% (F7) supply air filter Automatic, 100% summer bypass Complies with Building Regulations, ErP and SAP recognised Choice of spigot locations (top entry as standard) Also available as part of the DV82 Entrö-V MVHR Kit (part no: 90001655) which provides a complete ventilation system ready for install 2 year warranty* 	 <p>Entrö-V</p> <ul style="list-style-type: none"> For use in dwellings up to 277 m² Flow rate up to 128 l/s (460 m³/h) at 100 Pa Over 85% thermal efficiency Double Coarse 55% (G4) filter design with an optional ePM1 60% (F7) supply air filter Automatic, 100% summer bypass Complies with Building Regulations, ErP and SAP recognised Choice of spigot locations (top entry as standard) Also available as part of the DV130 Entrö-V MVHR Kit (part no: 90001656) which provides a complete ventilation system ready for install 2 year warranty*

DV51 / DV96 / DV110 / DV145 / DV245




Adroit™

- Range suitable for dwellings up to 400 m²
- Flow rate up to 271 l/s (976 m³/h) at 100 Pa
- Up to 92% thermal efficiency and low SFP
- Remote “on the go” Internet and BMS control available
- Unique triple filter facility including an ePM1 50% (F7) pollen filter
- Range available in left and right-hand models
- Complies with Building Regulations, SAP recognised, ErP and Passive House Institute certified when fitted with integral electric heater
- 5 year warranty*





PROUD WINNER 2024

Decentralised Mechanical Ventilation with Heat Recovery




Unohab

- Lots of flexibility with low noise levels
- EC motors and built-in filter
- Can be connected to other units to provide total house solution
- Can be connected to extractor fans in wet rooms to ensure correct air volumes of air are supplied when fans are in use
- Systems can be designed to meet Part F in Building Regulations
- Can be installed in retrofit or new build
- Used in multiple occupancy properties
- Ideal for use in multiple occupancy properties
- Suitable for various wall depths
- 2 year warranty*

DV50 / DV80




Adroit™

- Suitable for dwellings up to 120m²
- Flow rate up to 93 l/s (225 m³/h) at 100 Pa
- Up to 90% thermal efficiency
- Remote “on the go” Internet and BMS control available
- Unique triple filter facility including an ePM1 50% (F7) pollen filter
- Available in left and right-hand models
- Complies with Building Regulations, SAP recognised, ErP and Passive House Institute certified when fitted with integral electric heater
- Integral carbon dioxide and humidity sensors as standard
- 5 year warranty*

EASILY ACCESSED FROM OUTSIDE THE PROPERTY

The Adroit has been designed to fit within a ceiling void. This means that Landlords can protect their investment by insuring planned maintenance from outside the dwelling. This preserves the building fabric, ensures occupier wellbeing and saves energy without the need to access the property or disturb the tenant.



- Easy access to replace filters
- Heat Recovery
- Removable, secure front cover panel for maintenance
- Removable Heat Exchanger for quick cleaning
- Durable steel double skin casing with 20mm insulation

*excludes motors. Motor warranty one year from date of purchase.

RESIDENTIAL MECHANICAL VENTILATION WITH HEAT RECOVERY (MVHR)



A Ventilation Unit with a Cooker Hood - Small Apartment Solution



Adroit™

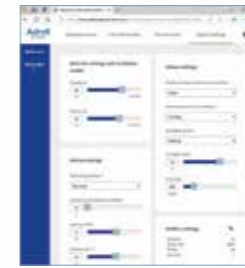
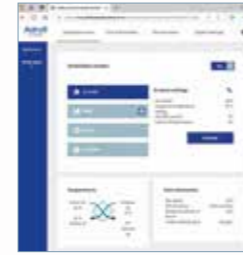
Combines ventilation and extraction of cooking odours in the kitchen

- Flow rate up to 47 l/s (170 m³/h) at 100 Pa
- Up to 84% thermal efficiency
- Full heat recovery for whole dwelling
- Recovers heat from the hob
- Slim and stylish extractor hood
- Internet control
- Integrated into the kitchen unit
- 5 years warranty*



*excludes motors. Motor warranty one year from date of purchase.

Customised Control, Anywhere



Adroit™

- Tailor your ventilation around your daily life
- Four customisable ventilation profiles can be scheduled around you
- BMS connectivity enables the property's ventilation to be controlled from a central point
- Maintain a healthy indoor air environment at all times whilst using minimal energy
- Profiles include:
 - Home** - control the everyday running rate
 - Away** - reduces the flow rate when demand is low
 - Boost** - increases the flow rate when occupancy has increased
 - Custom** - customise the unit operating mode to suit user preferences



Control Made Easy

Adroit™



INTERNET

'Smart' control via Adroit Cloud from your PC, tablet or smartphone for 'on-demand' connectivity.



GRAPHICAL CONTROL PANEL

Control panel guides you step by step, to get started. The coloured display is intuitive and easy to use.



ADROIT CLOUD

With the user's permission, Airflow technical support can connect to the unit and monitor its functions remotely.



HOME NETWORK

Connect the unit to the home network and then control it with a computer or a mobile device connected wirelessly into the network.



HOUSE AUTOMATION

Connect the ventilation unit into house automation through the Modbus.



HUMIDITY SENSOR

Adroit units have an integrated humidity sensor that boosts ventilation as needed, for instance, after a bath or shower. Ventilation level is also reduced automatically when excessive humidity has been removed. If needed, you can have an additional humidity sensor for rooms where the humidity level fluctuates, such as bathroom.



CARBON DIOXIDE SENSOR (CO₂)

Automate ventilation totally by purchasing a carbon dioxide sensor. It automatically boosts ventilation when the carbon dioxide level rises. Indoor air remains fresh and oxygen rich even if the house is full of people.



HEATERS

On those rare occasions when the outside temperature drops well below zero, optional heaters are available to top up the indoor temperature and protect the unit from frost.

CONTROL ON THE GO

Monitor and control your ventilation on the go. Airflow 'Cloud Control' makes life easy.

Digital Controller



4 user profiles. 100% adjustable ventilation, touch screen

Manual Controller



Wall mounted, four speed (independently adjustable) rotary switch controller

CO₂ Transmitter



Sensor used for detecting and controlling carbon dioxide concentration

Humidity Transmitter



Sensor used for detecting and controlling relative humidity concentrations



COMMERCIAL MECHANICAL VENTILATION WITH HEAT RECOVERY (MVHR)



DUPLEXbase PS

- Wide range of compact heat recovery units with air flow rates between 650 to 6000 m³/h
- Up to 93% thermal efficiency
- Low energy EC fans with backward curved centrifugal impellers
- Separate doors for easy filter access
- Supply air filter ePM1 55% (F7) and exhaust air filter ePM10 50% (M5) as standard. Filter monitoring via differential pressure
- Optional heating and cooling coils
- Can be installed both vertically and horizontally, indoors or outdoors
- 100% adjustable digital controller with Internet, VAV and BMS connection
- Off the shelf delivery
- Can be selected & specified via unique selection software
- Complies with BREEAM, ErP, VDI 6022 and Passive House Institute certified
- 2 year warranty*



COMMERCIAL MECHANICAL VENTILATION WITH HEAT RECOVERY (MVHR)



DUPLEXbase PT

- Range of compact-designed heat recovery units with air flow rates between 500 to 3500 m³/h
- Over 90% thermal efficiency
- Low energy EC fans with backward curved centrifugal impellers
- Floor standing position (all ports are upwards / vertical) for space saving
- Supply air filter ePM1 55% (F7) and exhaust air filter ePM10 50% (M5) as standard. Filter monitoring via differential pressure
- Optional built-in heating and cooling coils
- 100% adjustable digital controller with Internet, VAV and BMS connection
- Can be selected & specified via unique selection software
- Complies with BREEAM, ErP and VDI 6022
- 2 year warranty*



*excludes motors. Motor warranty one year from date of purchase.

COMMERCIAL MECHANICAL VENTILATION WITH HEAT RECOVERY (MVHR)



Duplexvent Multi Eco



DUPLEXVENT®



- 11 unit range with a flow rate up to 2222 l/s (8000 m³/h) at 400 Pa
- Up to 93% thermal efficiency
- Low energy EC fans
- Side entry, Top Entry (Multi Eco-V) and Outdoor (Multi Eco-Roof) versions available
- 100% adjustable digital controller with internet, VAV and BMS connection
- Coarse 60% / ePM10 50% / ePM1 55% / PM1 80% (G4 / M5 / F7 / F9) class filter options
- Complies with BREEAM, Building Regulations and ErP
- 2 year warranty*



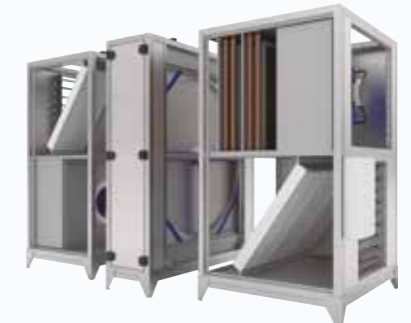
Duplexvent Rotary



DUPLEXVENT®



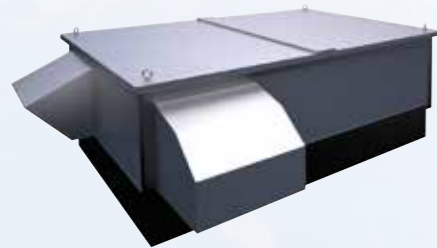
- 7 indoor unit range with flow rate up to 3056 l/s (11000 m³/h) at 200 Pa
- Highly efficient rotary wheel heat exchanger with up to 85% thermal efficiency
- Low energy EC fans
- 100% adjustable digital controller with internet, VAV and BMS connectivity
- Coarse 60% / ePM10 50% / ePM1 55% / ePM1 80% (G4 / M5 / F7 / F9) class filter options
- Complies with BREEAM and ErP
- 2 year warranty*



Duplexvent Multi Eco Roof



DUPLEXVENT®



- 8 unit range for rooftop installation
- Unique, concealed duct connections
- Flow rate up to 2222 l/s (8000 m³/h) at 200 Pa
- Up to 93% thermal efficiency
- Low energy Electrically Commutated (EC) fans
- 100% adjustable digital controller with internet, VAV and BMS connection
- Coarse 60% / ePM10 50% / ePM1 55% / ePM1 80% (G4 / M5 / F7 / F9) class filter options
- Complies with BREEAM, Building Regulations and ErP
- 2 year warranty*



Duplexvent Rotary Roof



DUPLEXVENT®



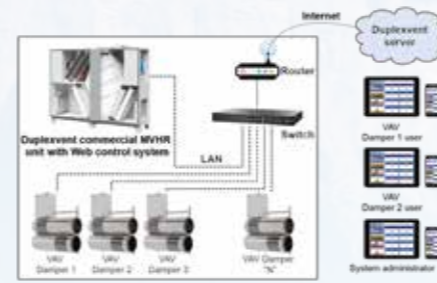
- 7 outdoor unit range with a flow rate up to 3056 l/s (11000 m³/h) at 400 Pa
- Highly efficient rotary wheel heat exchanger with up to 85% thermal efficiency
- Low energy EC fans
- 100% adjustable digital controller with internet, VAV and BMS connection
- Coarse 60% / ePM10 50% / ePM1 55% / ePM1 80% (G4 / M5 / F7 / F9) class filter options
- Complies with BREEAM and ErP
- 2 year warranty*



VAV System



- Suitable for all Duplexvent commercial MVHR units
- Independent monitoring and air flow regulation for individual area requirements
- Intelligent, internet controlled dampers for fine adjustment of air flow
- Real time data transfer and regulation of VAV dampers to a central monitoring station
- Optimises the performance of an MVHR unit and reduces the ongoing operating costs of your ventilation system
- Allows users to control the system through smartphone and PC
- Helps analyse ventilation and heating energy costs by zone
- Doesn't require a BMS system



Example system
Duplexvent commercial MVHR unit with Web control

Susurro Dezajno 400 / 700 / 1000

Susurro®



- 3 unit single room decentralised heat recovery ventilation range with a flow rate up to 404 l/s (1456 m³/h)
- Perfect for classrooms, meeting rooms and waiting rooms
- Up to 90% heat recovery efficiency
- Low energy Electrically Commutated (EC) fans
- Low noise level just 35 dB(A) at nominal air flow make it ideal for office and classroom use
- Automatic 100% bypass, built-in CO₂ sensor
- Slim design with low installation height for efficient space usage
- 3 year warranty*



*excludes motors. Motor warranty one year from date of purchase.

HAND DRYERS

ecoDRY Range



- Flow rates up to 52 l/s (187 m³/h)
- IP23 rating
- White ABS plastic, satin die cast aluminium or matte black steel
- Automatic sensor operated
- Very quick drying time of 10-15 seconds
- Noise levels from 68db(A) at 2 m
- Blue LED downlight when in use
- Air speed from 250 km/h
- Only 2.3 W per drying cycle (ecoDRY 550 only)
- Agion® Silver Antimicrobial treated
- 3-year warranty*



*Excludes motor brushes

ecoDRY mini Range



- Flow rates up to 31 l/s (110m³/h)
- IP23 rating
- White or matte black ABS plastic or satin chrome finish
- Automatic sensor operated
- 20 second drying time
- Noise level from 70db(A) at 2 m
- Smallest hand dryer in class – less than 10 cm in depth
- Air speed from 200 km/h
- 400 watt motor / 500 watt heating element
- Double insulated
- 3-year warranty*

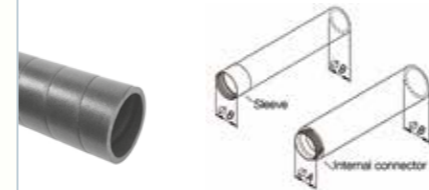


*Excludes motor brushes

ACCESSORIES

Airflex ISO - Insulated rigid ducting

Airflex iso Pipe

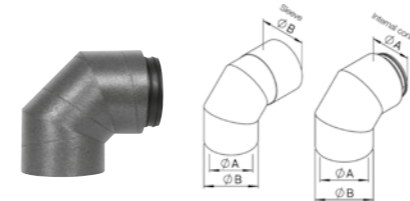


Part No.	
9041147	ø125 mm x 2000 mm
90000505	ø160 mm x 950 mm
90000465	ø160 mm x 2000 mm
9041250	ø180 mm x 1000 mm
90000475	ø180 mm x 2000 mm

- ISO pipe ducting, pre-insulated
- Tough, durable, anti-static EPP construction
- Fire retardant to EU-B2 - DIN 4102
- Choice of components to suit any layout
- Timer, Humidity Timer controls
- Typically connects to MVHR units, distribution boxes and to outside for venting
- Pre-insulated duct for when the ventilation unit is outside the warm envelope of the house, to help reduce condensation

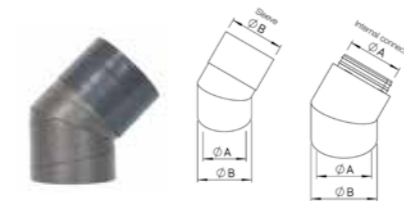
Airflex ISO - Bends and connectors

Sealing Cap Round



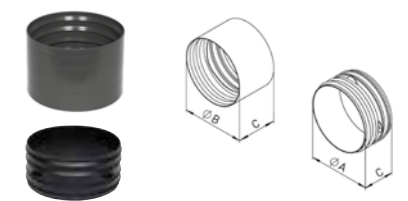
Part No.	
9041152	ø125 mm 90° ISO bend with collar
90000467	ø160 mm 90° ISO bend with male/male connector
90000477	ø180 mm 90° ISO bend with male/male connector

Sealing Cap Oval



Part No.	
9041154	ø125 mm 45° ISO bend with collar
90000466	ø160 mm 45° ISO bend with male/male connector r
90000476	ø180 mm 45° ISO bend with male/male connector

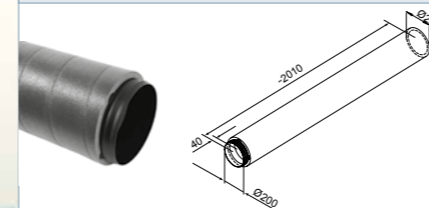
Sealing Cap for Distrabution Box



Part No.	
9041149	ø125 mm ISO pipe female /female Connector (plastic)
90000468	ø160 mm ISO pipe male / male Connector (plastic)
90000478	ø160 & 180 mm ISO pipe male / male Connector (plastic)

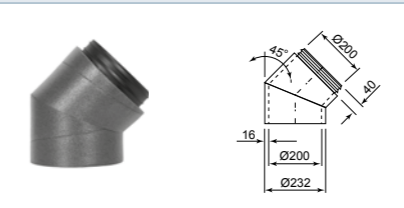
Airflex ISO - Rigid Ducting

ISO Pipe



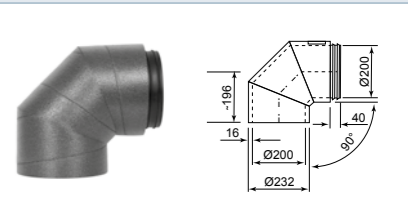
Part No.	
90001373	ø200 mm x 2M ISO Pipe

45° ISO Bend



Part No.	
90001277	ø200 mm 45° ISO Bend

90° ISO Bend



Part No.	
90001278	ø200 mm 90° ISO Bend

AIRFLEXPRO SEMI-RIGID DUCTING



AirflexPro - Elliptical and Round



- Zero leakage ensures highest system performance
- Unique design saves 70% on installation time
- Interchangeable ducting system (75 mm round / 51 mm x 114mm elliptical) without any hydraulic pressure loss
- Compact design, suits narrow joists and low ceiling voids
- Ducting crushability of 10kN/m² which enables ducting to be encased in up to two metres thick concrete
- Smooth bore with anti-static and anti-bacterial lining
- SAP recognised ducting (non-jointed)



Also available: blue round ducting

Airflex Interchangeable System



MIX AND MATCH SEMI-RIGID DUCTING

AirflexPro round and AirflexPro elliptical have the same hydraulic pressure and can be used in the same ducting system without any loss of performance.

RETRO DUCTING



Retro

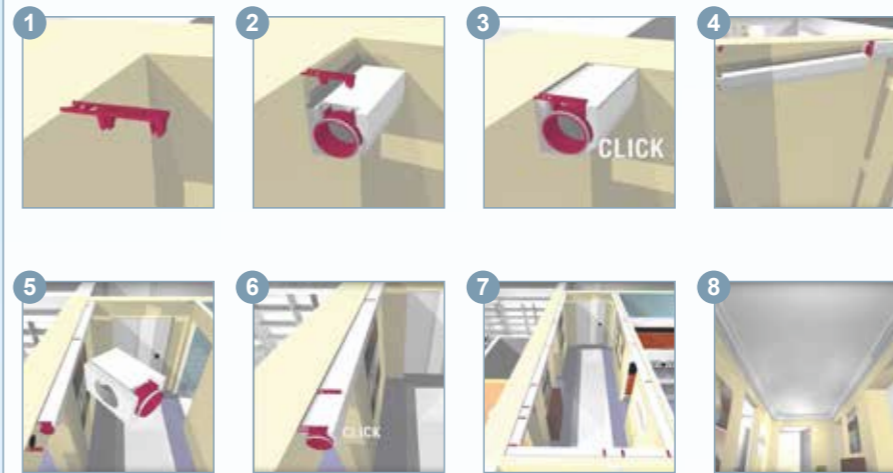


Retro™

- Ideal for social housing, new build and renovation projects
- Made of highly compressed, closed cell EPS
- Available in basic and stucco profiles
- Negates the need for suspended ceiling to hide ducting system
- Suitable for MVHR, MEV and intermittent fan systems
- Can be painted to suit inside décor of dwelling
- Maximum temperature 70°C
- Fire Protection Class B1 (DIN 4102-1), B-s1 d0/C-s1 d0 (EN 13501-1), Class 0/Class 1 (BS 476-6/7)



Retro Easy Installation



Retro™

Ideal for any repair, maintenance and improvement project where you want to disguise the ducting as part of the buildings fabric. It blends seamlessly into the fabric of the building and is unobtrusive. It can be painted to suit existing décor and you have a choice of two profiles.



UNITED KINGDOM (head office)

Airflow Developments Limited
Aidelle House, Lancaster Road
Cressex Business Park
High Wycombe, Bucks. HP12 3QP.

Tel: +44 (0) 1494 525252
Email: info@airflow.com
Web: airflow.com

GERMANY

Airflow Lufttechnik GmbH
Wolbersacker 16
53359
Rheinbach, Germany

Tel: +49 (0) 2226 92050
Email: info@airflow.de
Web: airflow.de

CZECH REPUBLIC

Airflow Lufttechnik - Praha
Hostynska 520
10800 Praha 10
Prague, Czech Republic

Tel: +42 (0) 2747 72230
Email: info@airflow.cz
Web: airflow.cz